

RENONCULES 9

CRÉÉ LE
2024-03-22

Surface totale 277.61 m ²	Étages 2	Pièces 20	Salles de bain 2.3
--	--------------------	---------------------	------------------------------

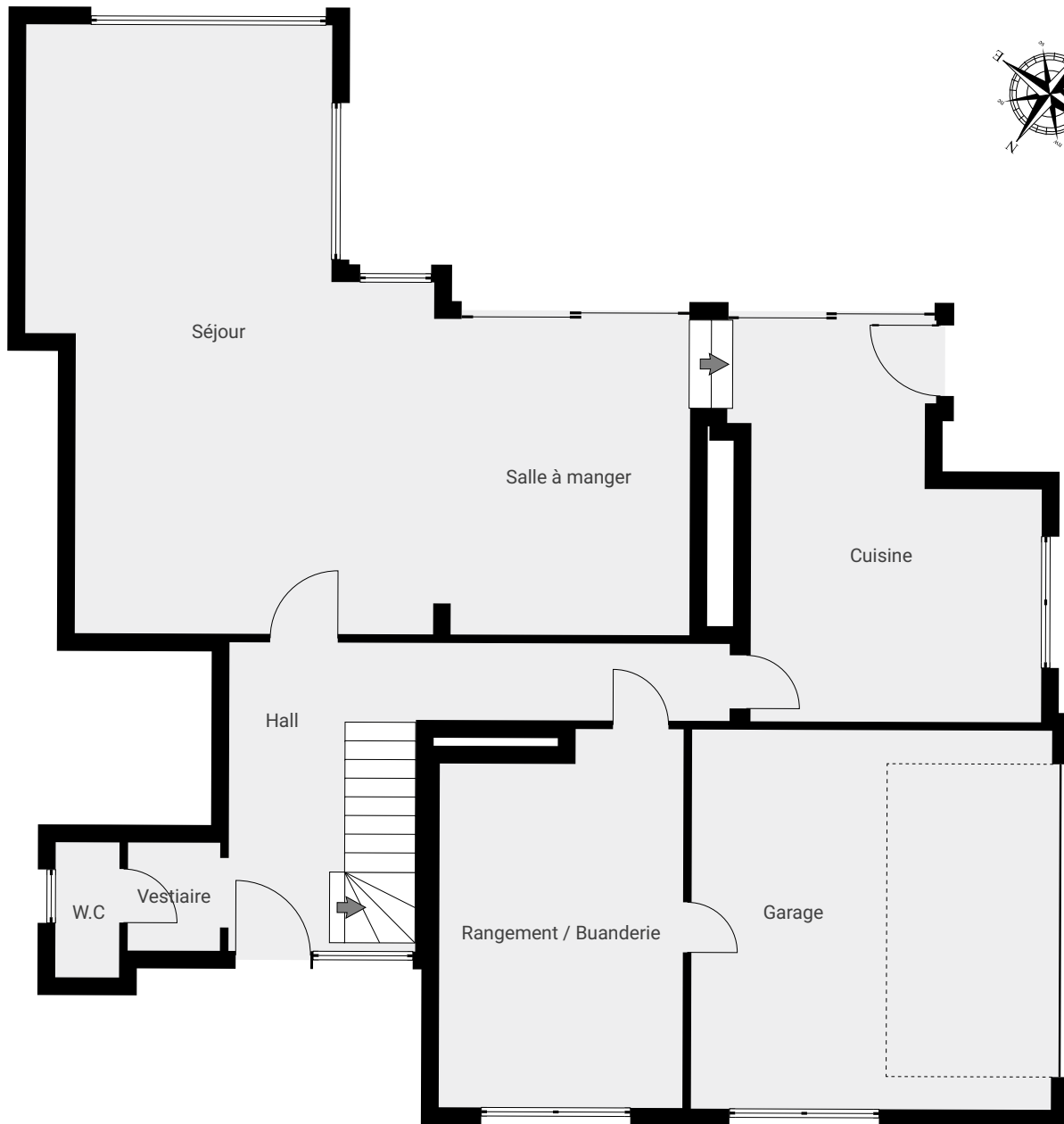
RENONCULES 9

SURFACE TOTALE : 277.61 m² • SURFACE HABITABLE : 250.60 m² • ÉTAGES : 2 • PIÈCES : 20



▼ Rez-de-chaussée

SURFACE TOTALE : 144.30 m² • SURFACE HABITABLE : 117.29 m² • PIÈCES : 8



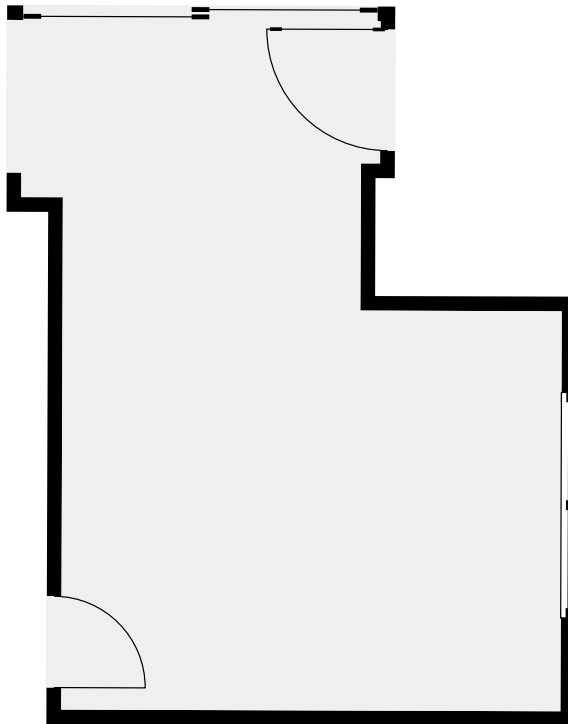
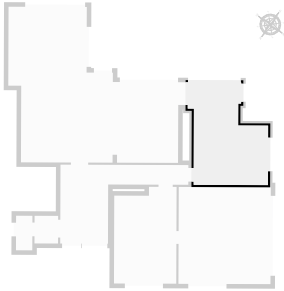
CETTE SUPERFICIE TOTALE CORRESPOND À L'ADDITION DES MESURES NETTES DE TOUTES LES PIÈCES, SANS COMPTER LES MURS, LES PASSAGES ENTRE LES PIÈCES ET LES GAINES TECHNIQUES

0 1 2 3 4m 1:95

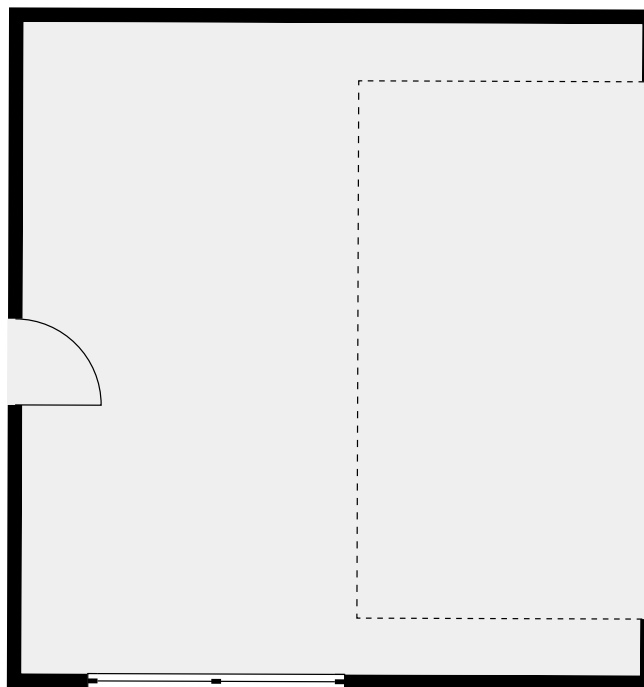
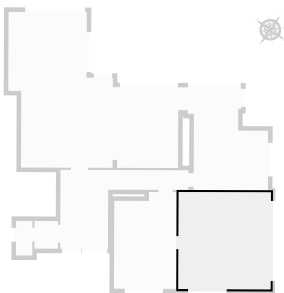
RENONCULES 9

SURFACE TOTALE : 277.61 m² • SURFACE HABITABLE : 250.60 m² • ÉTAGES : 2 • PIÈCES : 20

▼ Cuisine Rez-de-chaussée



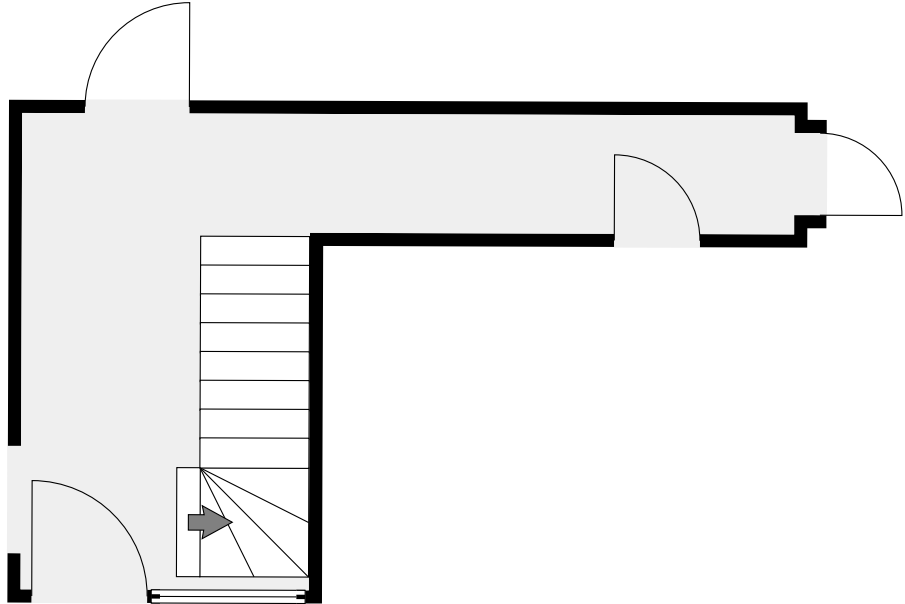
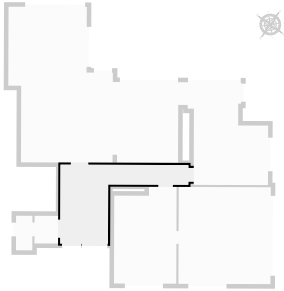
▼ Garage Rez-de-chaussée



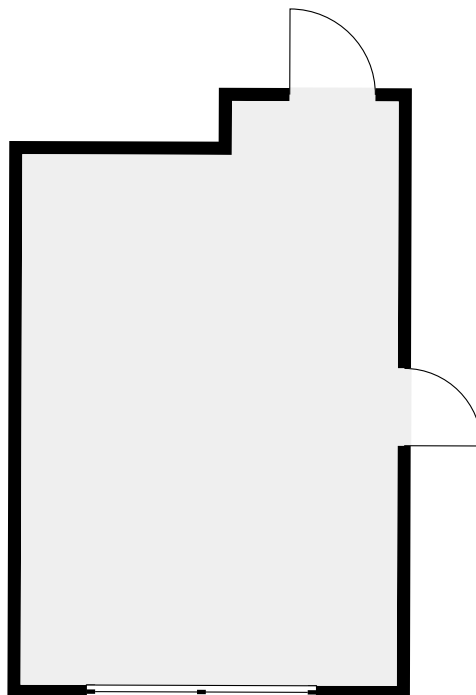
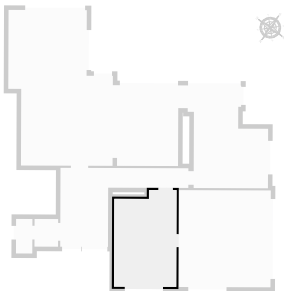
RENONCULES 9

SURFACE TOTALE : 277.61 m² • SURFACE HABITABLE : 250.60 m² • ÉTAGES : 2 • PIÈCES : 20

▼ Hall Rez-de-chaussée



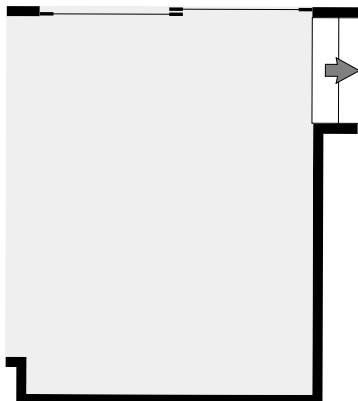
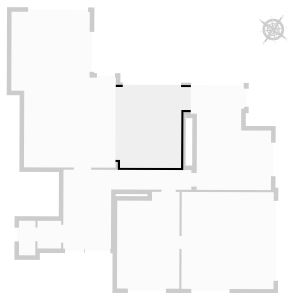
▼ Rangement / Buanderie Rez-de-chaussée



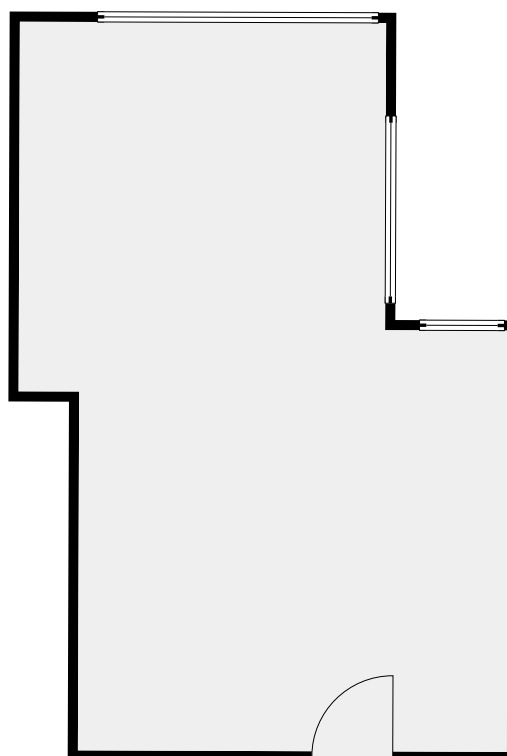
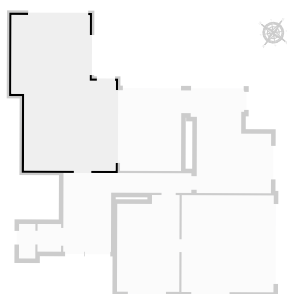
RENONCULES 9

SURFACE TOTALE : 277.61 m² • SURFACE HABITABLE : 250.60 m² • ÉTAGES : 2 • PIÈCES : 20

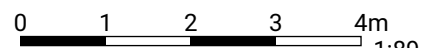
▼ Salle à manger Rez-de-chaussée



▼ Séjour Rez-de-chaussée



CETTE SUPERFICIE TOTALE CORRESPOND À L'ADDITION DES MESURES NETTES DE TOUTES LES PIÈCES,
SANS COMPTER LES MURS, LES PASSAGES ENTRE LES PIÈCES ET LES GAINES TECHNIQUES



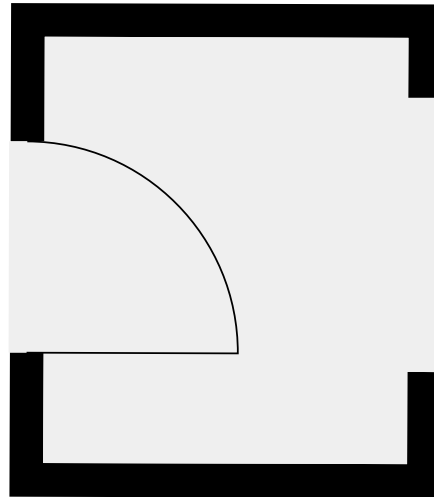
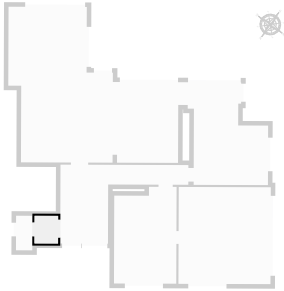
1:89

RENONCULES 9

SURFACE TOTALE : 277.61 m² • SURFACE HABITABLE : 250.60 m² • ÉTAGES : 2 • PIÈCES : 20

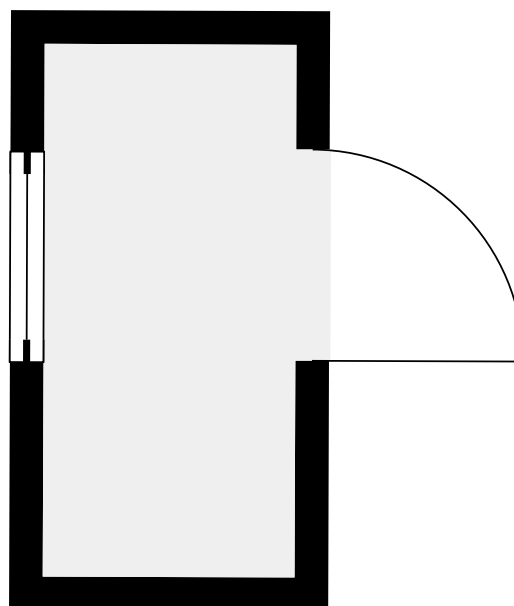
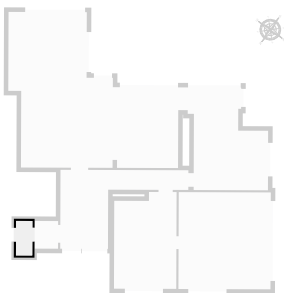
▼ Vestiaire

Rez-de-chaussée



▼ W.C

Rez-de-chaussée



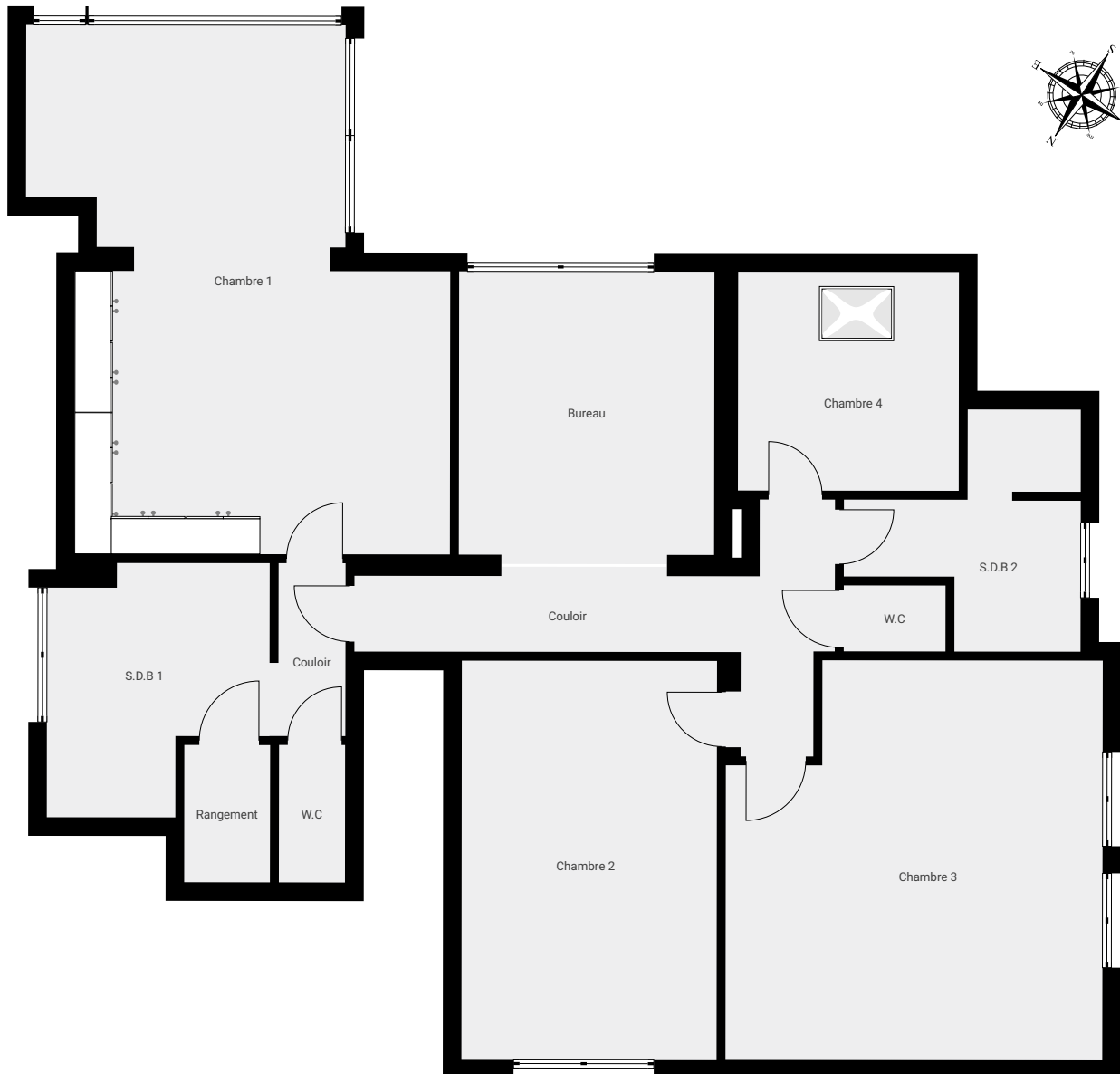
RENONCULES 9

SURFACE TOTALE : 277.61 m² • SURFACE HABITABLE : 250.60 m² • ÉTAGES : 2 • PIÈCES : 20



▼ 1er étage

SURFACE TOTALE : 133.31 m² • SURFACE HABITABLE : 133.31 m² • PIÈCES : 12



CETTE SUPERFICIE TOTALE CORRESPOND À L'ADDITION DES MESURES NETTES DE TOUTES LES PIÈCES, SANS COMPTER LES MURS, LES PASSAGES ENTRE LES PIÈCES ET LES GAINES TECHNIQUES

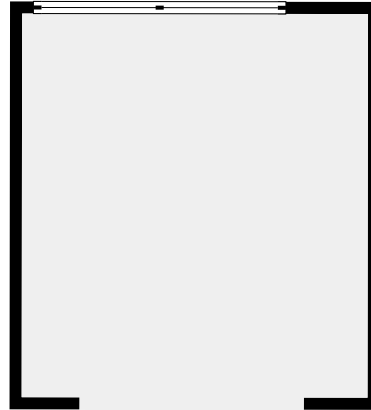
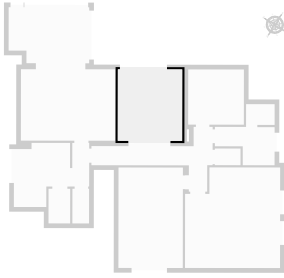
0 1 2 3 4m

1:92

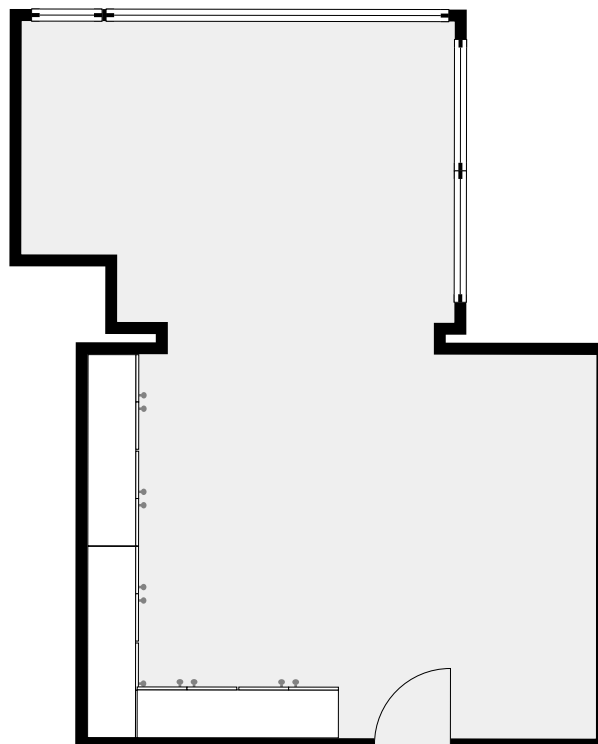
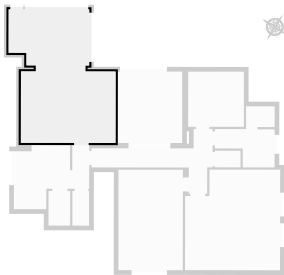
RENONCULES 9

SURFACE TOTALE : 277.61 m² • SURFACE HABITABLE : 250.60 m² • ÉTAGES : 2 • PIÈCES : 20

▼ Bureau 1er étage



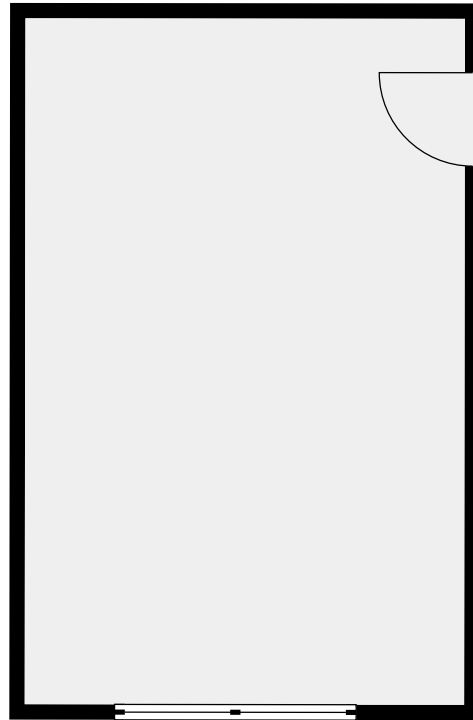
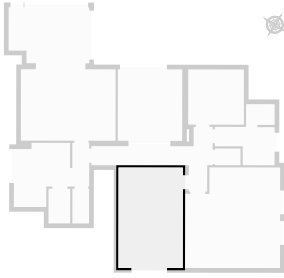
▼ Chambre 1 1er étage



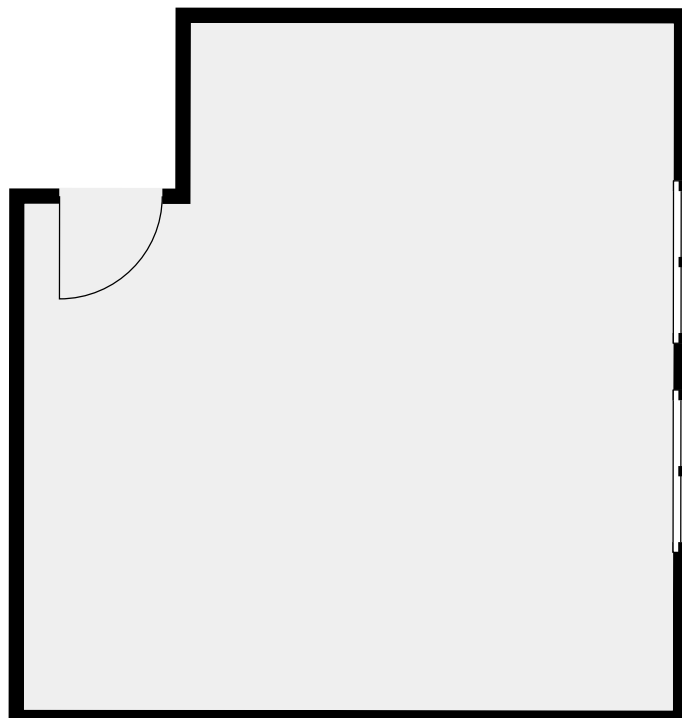
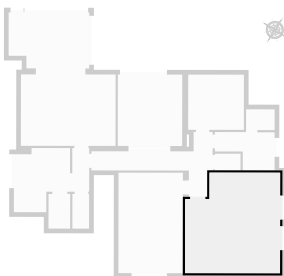
RENONCULES 9

SURFACE TOTALE : 277.61 m² • SURFACE HABITABLE : 250.60 m² • ÉTAGES : 2 • PIÈCES : 20

▼ Chambre 2 1er étage



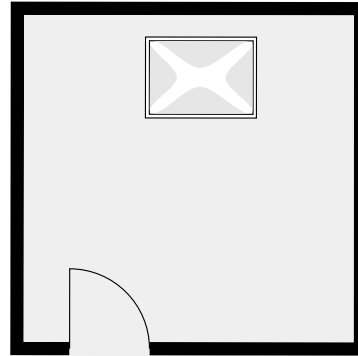
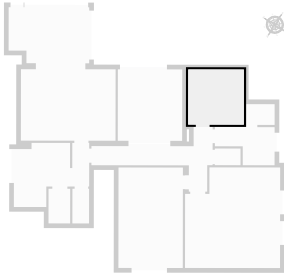
▼ Chambre 3 1er étage



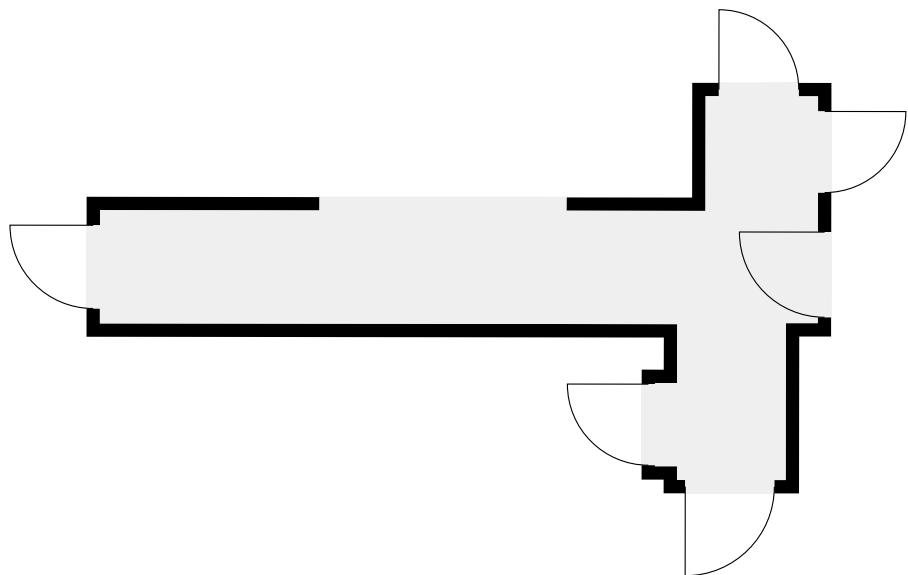
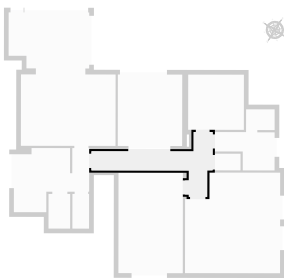
RENONCULES 9

SURFACE TOTALE : 277.61 m² • SURFACE HABITABLE : 250.60 m² • ÉTAGES : 2 • PIÈCES : 20

▼ Chambre 4 1er étage



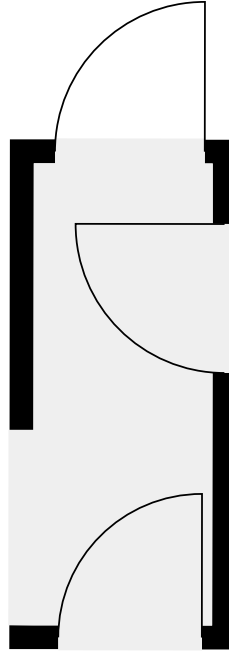
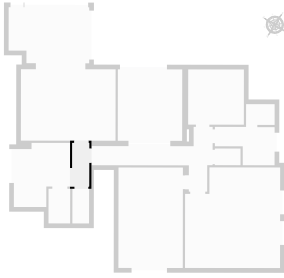
▼ Couloir 1er étage



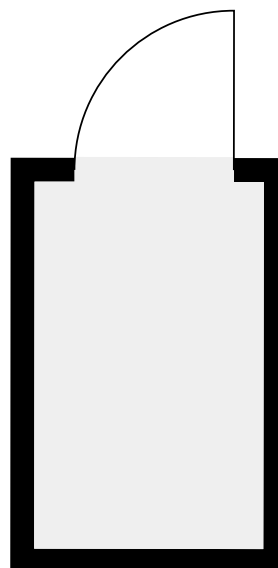
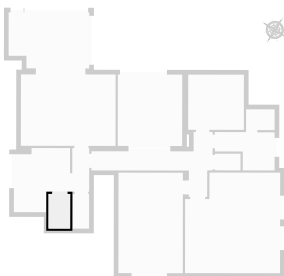
RENONCULES 9

SURFACE TOTALE : 277.61 m² • SURFACE HABITABLE : 250.60 m² • ÉTAGES : 2 • PIÈCES : 20

▼ Couloir 1er étage



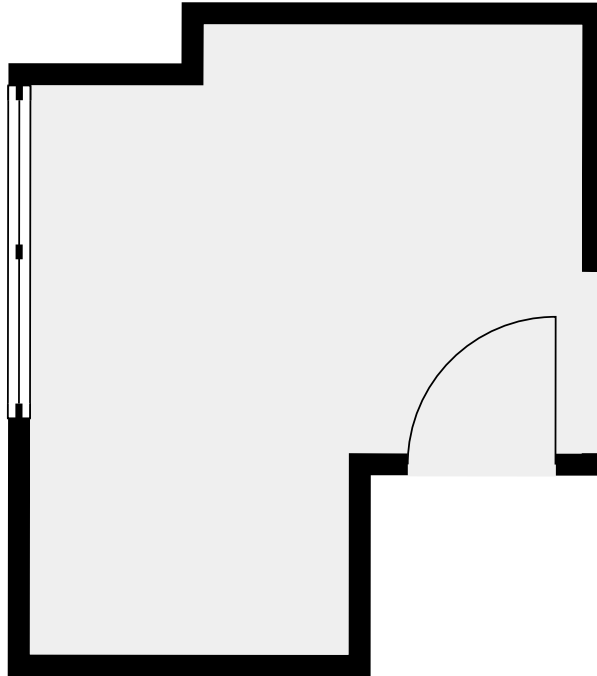
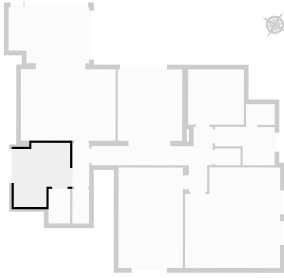
▼ Rangement 1er étage



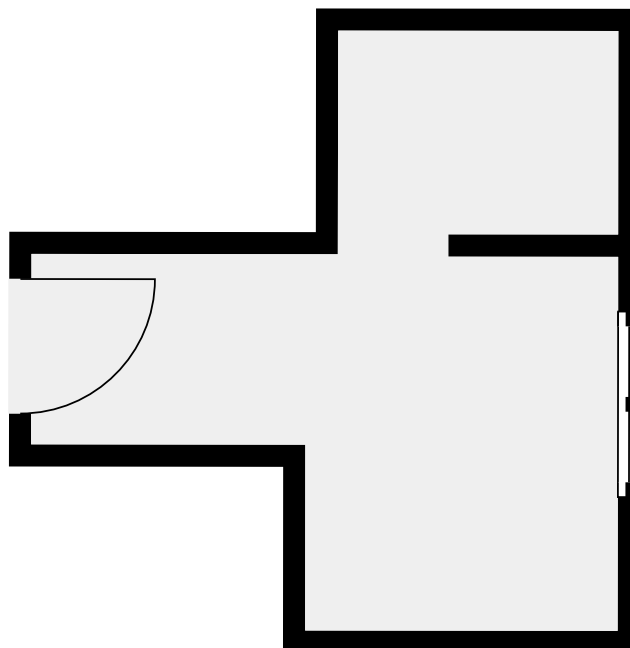
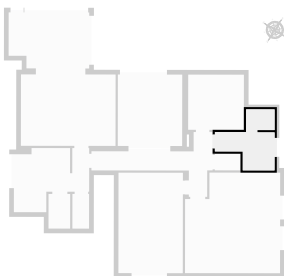
RENONCULES 9

SURFACE TOTALE : 277.61 m² • SURFACE HABITABLE : 250.60 m² • ÉTAGES : 2 • PIÈCES : 20

▼ S.D.B 1 1er étage



▼ S.D.B 2 1er étage

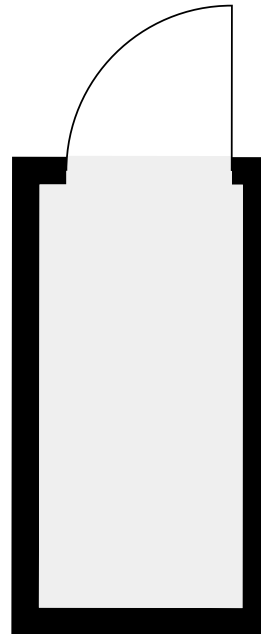
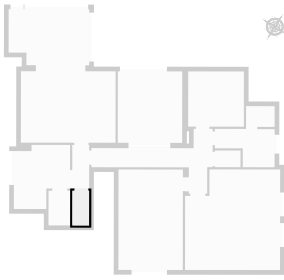


RENONCULES 9

SURFACE TOTALE : 277.61 m² • SURFACE HABITABLE : 250.60 m² • ÉTAGES : 2 • PIÈCES : 20

▼ W.C

1er étage



▼ W.C

1er étage

